



hôtel **Le Littré**
Paris Rive Gauche

Hôtel Le Littré

Welcome to
“L’intemporel parisien”

A brand new home awaits you in the heart of Paris!

Discover the hotel by the numbers / Last renovations of the common areas: 2015

1924

When the hotel was built

8

Floors

5

Rooms with private terrace and view on the Eiffel Tower

3

Rooms adapted for disabled people (wheelchair)

2

Lifts

90
Total number of rooms

hôtel **Le Littré**
Paris Rive Gauche



Spacious and luminous lobby area
We focus on **quality** and deliver high service




hôtel **Le Littré**
Paris Rive Gauche
★ ★ ★ ★

Cosy and intimate place:
Le Verandabar
What best after a long day touring the city?



Full American buffet breakfast is served everyday, from 7 am to 10.30 am in the main breakfast room (until 11 am in the room – no charge)
Room service available every day from 7 am to 11:30 pm.



Free
Sauna

Facilities
Ironing room on the 5th floor
Secured luggage room
Magazines and newsletters with our monthly
recommendations

Free Business Center & free
WIFI everywhere in the hotel



Other services (\$):
Private parking: 28.00 EUR per night per
vehicle
Laundry and dry cleaning services


hôtel **Le Littré**
Paris Rive Gauche
★★★★



View on the courtyard from most of the rooms

hôtel **Le Littré**
Paris Rive Gauche
☆☆☆☆

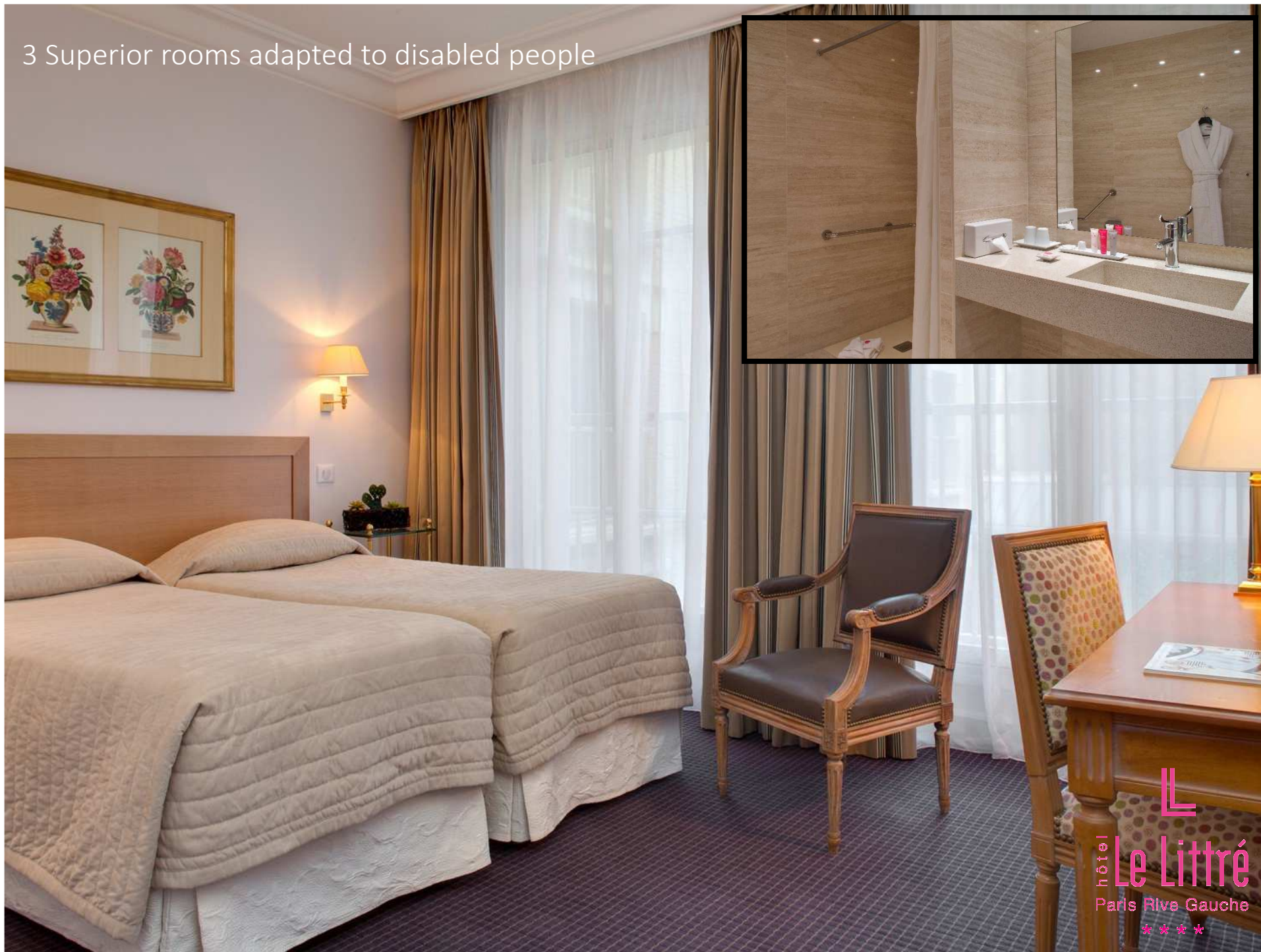
35 **Standard** rooms each with a minimum of 215 sq. Ft. (20m²)



23 **Superior** rooms ranging in size from 215 sq. ft to 322 sq.ft (20 to 25m²)
Some with a sofa bed to accommodate a third person



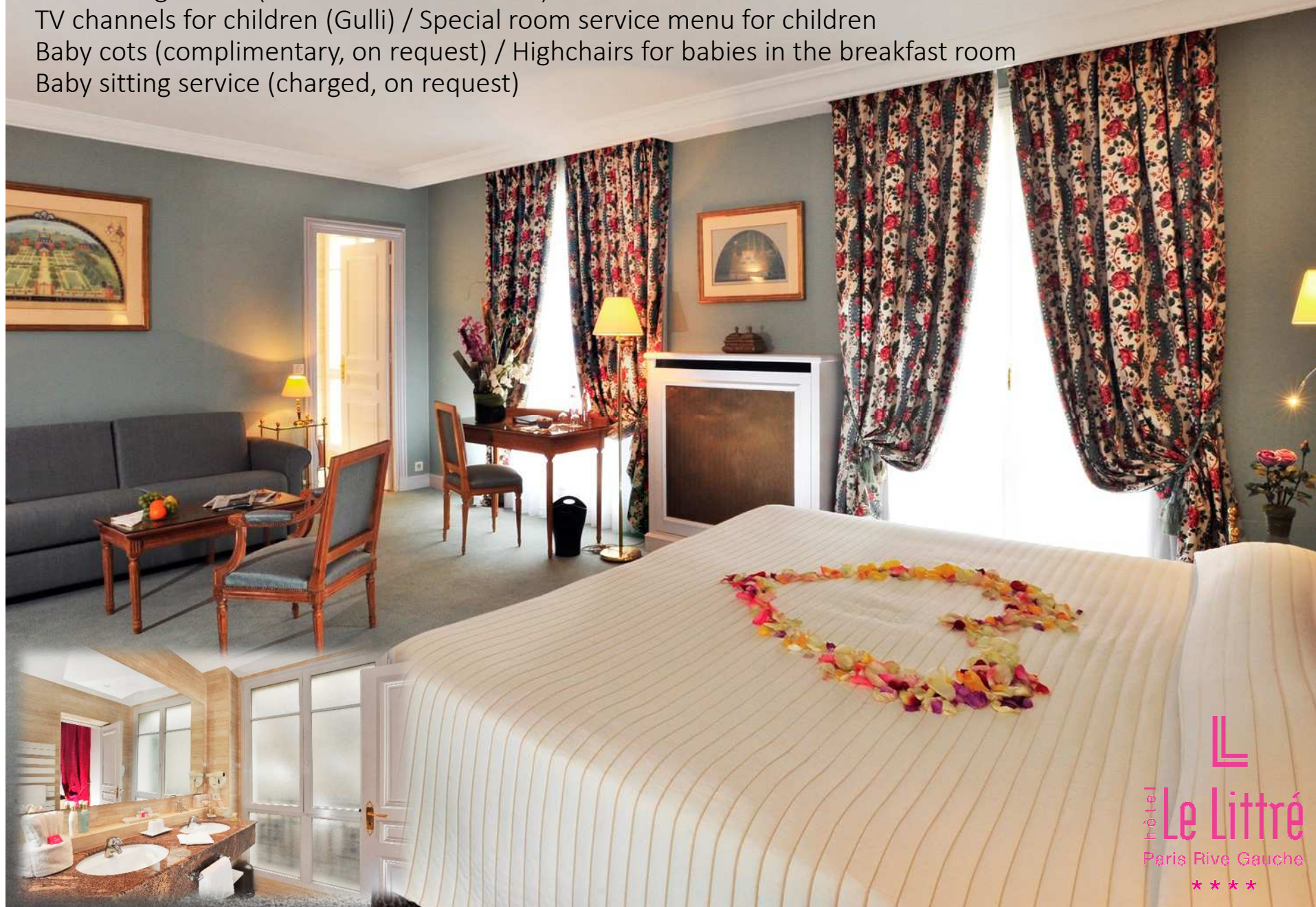
3 Superior rooms adapted to disabled people




21 spacious **Deluxe** rooms ranging in size from 322 sq.ft to 430 sq.ft (30 to 35 m²), each including a sitting area and a **sofa bed** to accommodate a third person



Family specials: Triple and Family rooms for 02 adults and 02 children under 12
Connecting rooms (Deluxe and Junior Suite)
TV channels for children (Gulli) / Special room service menu for children
Baby cots (complimentary, on request) / Highchairs for babies in the breakfast room
Baby sitting service (charged, on request)





07 Junior Suites and 04 Suites
ranging in size from 430 sq.ft to
753 sq.ft (40 to 60 m²)
Separate living room that includes
a sofa bed for a third person

5 rooms with a private terrace and **panoramic view on the Eiffel Tower and the golden “Dôme des Invalides”**

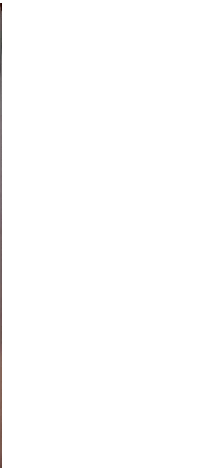
Superior : 3
Deluxe: 1
Suite: 1



hôtel **Le Littré**
Paris Rive Gauche



Superior room
with Eiffel Tower
view



Suite with Eiffel Tower
view



Deluxe with
Eiffel Tower
view



Suite with Sacré-Coeur view (Montmartre)



Le Littre
Paris Rive Gauche

The hotel is also equipped with a cardiac defibrillator and employees received safety trainings and certifications



Equipment in all room categories

- Individual air conditioning
- Double glazed windows that open
- Minibar
- Locks with magnetic cards
- In room safe
- Telephone
- Flat screen TV with 20 international channels
- Bathtub and/or shower cabin
- Bathrobes and slippers
- Hairdryer
- Welcome amenities products
- Smoking and non smoking floors

Concierge & Services

Our precious partners that make you discover Paris out of the beaten paths!

Montparnasse Tower

Bateaux Mouches: river cruise on the Seine

Jacquemart-André Museum

Museum Pass (2 & 4 days)

Paris Story

Metro & bus tickets

[Mobile application](#) with all necessary information about our property and Paris destination

An easy 05 minute walk to the Montparnasse Tower where you can enjoy the best 360° view of Paris!



Direct access to the main tourist attractions

The Luxembourg Garden and the Latin district: a 10 minute walk

The Invalides: a 20 minute walk

The Opera Garnier: 15 minutes by bus (direct line)

The Champs Elysées: 20 minutes by metro (direct line)

The Sacré Cœur & Montmartre: 30 minutes by metro (direct line)

Notre Dame: a 30 minute walk or 15 minutes by metro (direct line)

The Orsay Museum: 15 minutes by metro (direct line)

The Eiffel Tower: 20 minutes by bus (direct line)

The Louvre Museum: 10 minutes by bus (direct line)




hôtel **Le Littré**
Paris Rive Gauche

Key points about Le Littré

An **ideal location** within the heart of Paris, on the **Left Bank**, between **Saint-Germain-des-Prés** and **Montparnasse**, our district is:

DYNAMIC

Restaurants, bistros, cabarets, theatres, museums, etc.)

SHOPPING CONVENIENT

From best known international brand to luxury and exclusive Parisian brands

CULTURAL & ARTISTIC

The place where Jean-Paul Sartre, Simone de Beauvoir, Paul Gauguin, Camille Claudel and others met decades ago...

BUSINESS ORIENTED

Proximity with many companies headquarters in Montparnasse, easy access to Porte de Versailles Exhibition Center

Spacious rooms & Rooms with view on the Eiffel Tower and the Sacré-Coeur

Free Wi-Fi and sauna



Very **easy and complete public transportation**, to and from the hotel:

METRO

Line n°4: Notre Dame, the Latin district (Saint Michel and Odeon), **Gare du Nord (the Eurostar to London and the Thalys to Bruxelles and Amsterdam);**

Line n°6: the Eiffel Tower, the Champs Elysees and the Arc de Triomphe;

Line n°12: Concorde, Madeleine, Gare Saint Lazare, Montmartre (Sacred Heart Basilica), the **Exhibition center at Porte de Versailles;**

Line n°13: the Invalides, the Champs Elysées;

Line n°10: Roland Garros, Parc André Citroën.

MONTPARNASSE TRAIN STATION

Only 05 minutes walking distance from the hotel, serves **Versailles Castle**, Brittany, the Loire valley, Poitou Charentes, Bordelais and Aquitaine regions.

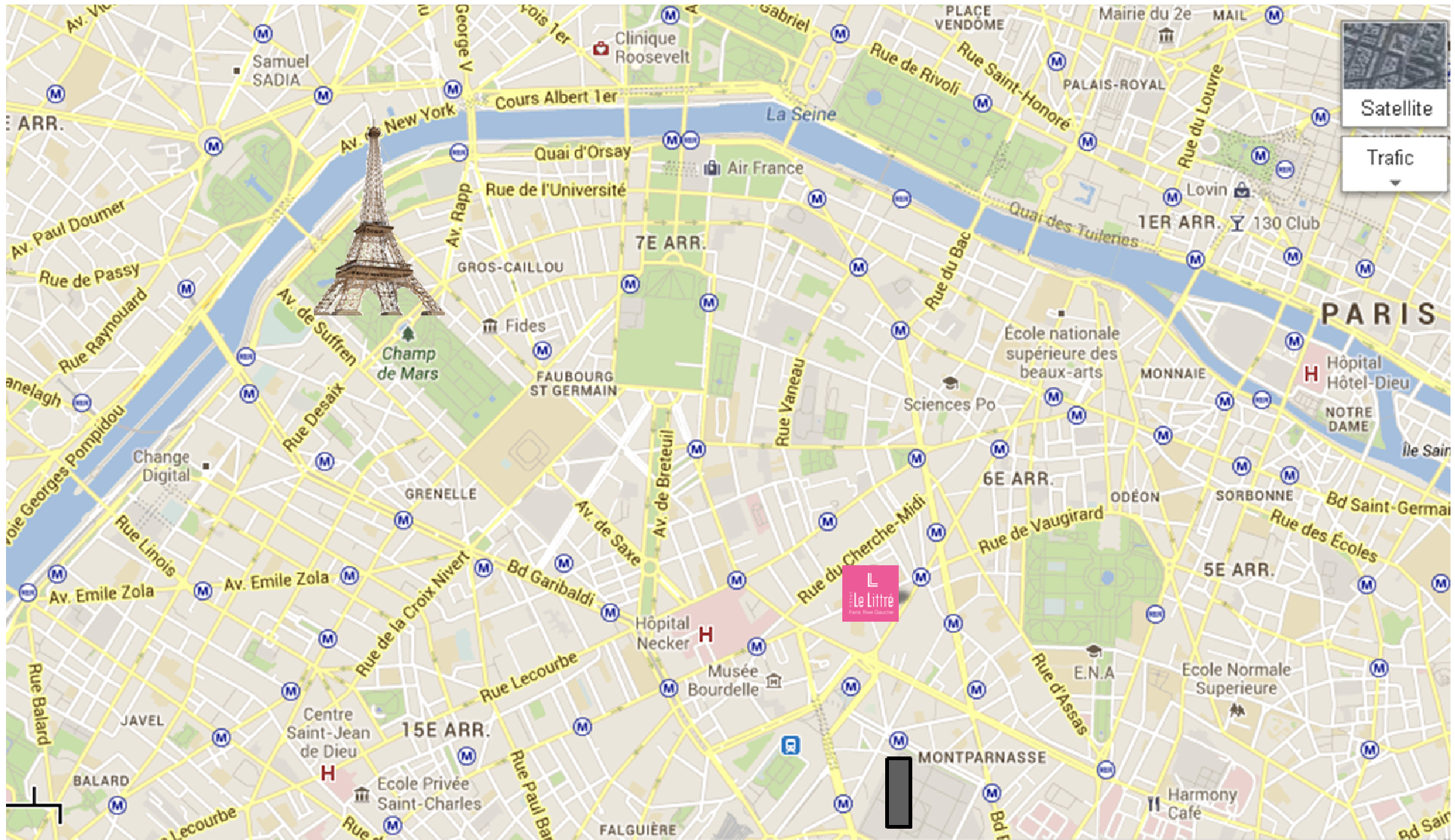
BUS

7 bus lines (Lines 28, 58, 82, 89, 91, 92, 94, 95, 96) that take you to all main Parisian attractions (Eiffel Tower, Louvre Museum, Opera House, etc.)

AIR FRANCE SHUTTLE

Stop of the Air France shuttles to Orly and Roissy Charles de Gaulle airports: a 10 minute walk from the Hotel





Hôtel Le Littré – 9 rue Littré – 75006 Paris



Eiffel Tower



Montparnasse Tower (the best view of Paris!)


hôtel **Le Littré**
Paris Rive Gauche

We're social: find us online!

#lelittrecelebration #roomswithview #intemporel #verandabar #laplumedulittré



How to book with us

DIRECT:

On our website www.hotellittréparis.com

By emailing hotellittré@hotellittréparis.com

By phone, calling +33 (0) 1.53.63.07.07

VIA OUR PARTNERS: agencies, tour operators, wholesalers, GDS

Code GDS

Amadeus LE PARLIT
Apollo / Galileo LE 3895
Sabre LE 31902
Worldspan LE 59897



Team members



NB:

All our prices exclude the city tax, which costs 2.48 EUR per person and per night

SEE YOU SOON IN THE
MAGICAL CITY OF LIGHTS!

HÔTEL
Le
LITTRÉ

1918
Le Littré
Paris Rive Gauche

October 2015